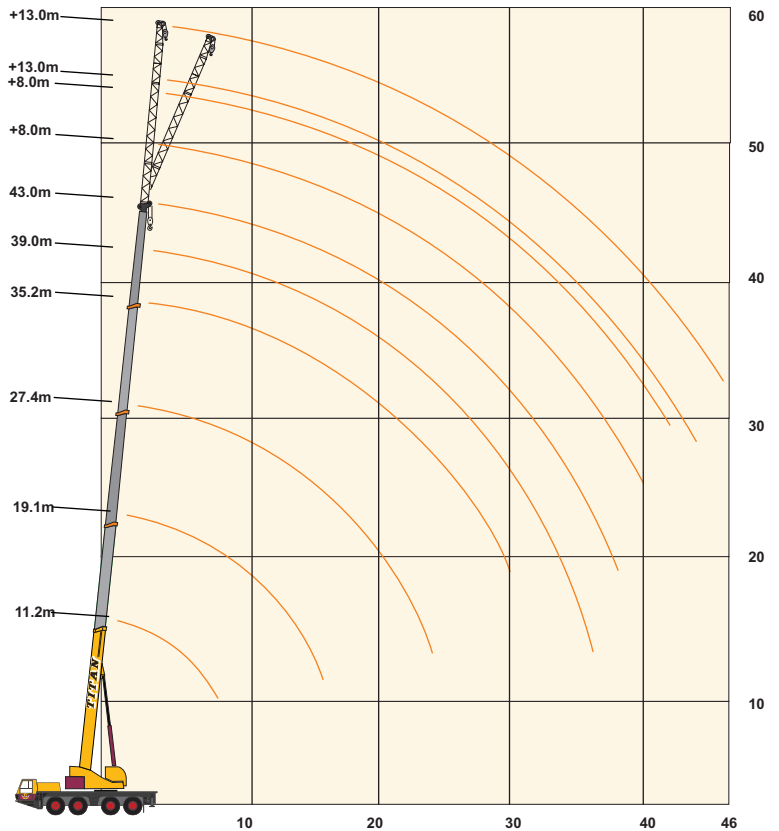
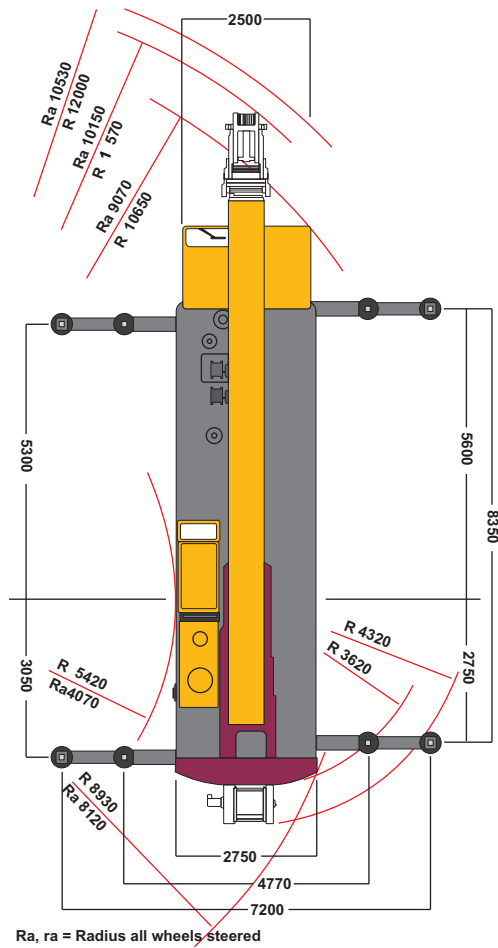


GENERAL DIMENSIONS

WORKING RANGE - MAIN BOOM



LOAD RATINGS IN TONNES

15.8t

360°
OUTRIGGER BASE - 8.35 x 7.20m
DIN 15019-2
Main boom

	Main boom - fixed lengths in m											
	11.2	11.2	19.0	19.2	22.9	27.0	27.1	27.4	34.9	35.2	39.0	43.0
Slewing Range	to the rear	360°										
Tel. sec. 1	0.0	0.0	1.0	0.0	1.0	1.0	0.0	0.0	1.0	0.0	1.0	1.0
Tel. sec. 11	0.0	0.0	0.0	0.5	0.5	0.5	1.0	0.0	1.0	1.0	1.0	1.0
Tel. sec. 111	0.0	0.0	0.0	0.5	0.0	0.5	1.0	1.0	1.0	1.0	1.0	1.0
Tel. sec. 1V	0.0	0.0	0.0	0.0	0.0	0.0	0.0	1.0	0.0	1.0	0.5	1.0
Radius in m	Lifting capacity in tonne											
3.0	80.0	65.5										
4.0	68.2	55.2	51.5	32.0	32.0							
5.0	58.3	46.7	44.7	32.0	32.0	32.0	24.0	13.0				
6.0	47.6	40.3	39.2	32.0	32.0	32.0	28.8	22.2	13.0	17.0		
7.0	40.0	35.3	34.1	32.0	29.1	25.9	19.8	13.0	17.0	13.0	13.0	
8.0	33.2	31.2	30.1	30.0	26.3	23.3	17.9	13.0	17.0	13.0	13.0	
9.0			25.5	27.4	23.9	21.1	16.2	12.0	16.5	13.0	13.0	11.0
10.0			21.1	23.1	21.2	19.2	14.8	11.0	15.2	12.5	13.0	11.0
11.0			17.8	19.7	17.9	17.6	13.6	10.0	14.0	11.6	13.0	11.0
12.0			15.2	17.0	15.4	15.9	12.5	9.3	13.0	10.7	12.3	11.0
13.0			13.1	14.9	13.3	13.9	11.6	8.6	12.1	9.9	11.5	11.0
14.0			11.4	13.2	11.5	12.1	10.8	8.0	11.2	9.2	10.7	11.0
15.0			9.9	11.7	10.0	10.6	10.1	7.5	10.5	8.5	10.0	10.0
16.0			8.6	10.4	8.8	9.3	9.4	7.0	9.7	7.9	9.4	9.2
18.0					6.8	7.3	8.2	6.3	7.7	6.9	8.2	7.9
20.0					5.2	5.8	7.0	5.7	6.1	6.1	6.6	7.0
22.0						4.5	5.7	5.2	4.9	5.5	5.4	5.8
24.0							3.5	4.7	4.7	3.9	4.4	4.7
26.0									3.0	4.6	3.5	3.9
28.0									2.3	4.0	2.8	3.2
30.0									1.7	3.4	2.2	2.6
32.0											1.7	2.0
34.0											1.2	1.6
36.0											0.8	1.2
38.0												0.8

15.8t

360°
OUTRIGGER BASE - 8.35 x 4.77m
DIN 15019-2
Main boom

	Main boom - fixed lengths in m										
	11.2	19.0	19.2	22.9	27.0	27.1	27.4	34.9	35.2	39.0	43.0
Slewing Range	360°										
Tel. sec. 1	0.0	1.0	0.0	1.0	1.0	0.0	0.0	1.0	0.0	1.0	1.0
Tel. sec. 11	0.0	0.0	0.5	0.5	0.5	1.0	0.0	1.0	1.0	1.0	1.0
Tel. sec. 111	0.0	0.0	0.5	0.0	0.5	1.0	1.0	1.0	1.0	1.0	1.0
Tel. sec. 1V	0.0	0.0	0.0	0.0	0.0	0.0	1.0	0.0	1.0	0.5	1.0
Radius in m	Lifting capacity in tonne										
3.0	59.0										
4.0	48.7	47.6	32.0	32.0							
5.0	41.2	40.1	32.0	32.0	32.0	24.0	13.0				
6.0	34.3	32.4	32.0	32.0	28.8	22.2	13.0	17.0			
7.0	25.8	24.2	26.5	24.4	25.1	19.8	13.0	17.0	13.0	13.0	
8.0	20.4	18.9	21.0	19.1	19.7	17.9	13.0	17.0	13.0	13.0	
9.0		15.2	17.1	15.3	16.0	16.2	12.0	16.4	13.0	13.0	11.0
10.0		12.4	14.3	12.5	13.2	14.5	11.0	13.6	12.5	13.0	11.0
11.0		10.2	12.1	10.3	11.0	12.3	10.0	11.4	11.6	12.0	11.0
12.0		8.5	10.4	8.6	9.2	10.6	9.3	9.6	10.7	10.2	10.7
13.0		7.1	8.9	7.2	7.8	9.1	8.6	8.2	9.9	8.8	9.2
14.0		5.9	7.7	6.0	6.6	7.9	8.0	7.0	8.9	7.5	8.0
15.0		4.9	6.7	5.1	5.6	6.9	7.5	6.0	7.8	6.5	6.9
16.0		4.1	5.8	4.2	4.8	6.0	7.0	5.1	7.0	5.7	6.1
18.0				2.9	3.4	4.6	6.1	3.7	5.5	4.3	4.6
20.0				1.8	2.3	3.5	5.0	2.7	4.4	3.2	3.6
22.0					1.5	2.6	4.1	1.8	3.5	2.3	2.7
24.0					0.8	1.9	3.4	1.1	2.8	1.6	2.0
26.0								0.5	2.2	1.0	1.4
28.0									1.7	0.5	0.9
30.0									1.3		

LOAD RATINGS IN TONNES

15.8t

360°
OUTRIGGER BASE - 8.35 x 7.20m
DIN 15019-2

Lengths of swing-away lattice extension 8,0 m							
Angle of swing-away lattice extension 0°							
	Main boom - fixed lengths in m						
	27.0	27.1	30.9	34.9	35.2	39.0	43.0
Slewing Range	360°						
Tel. sec. 1	1.0	0.0	1.0	1.0	0.0	1.0	1.0
Tel. sec. 11	0.5	1.0	1.0	1.0	1.0	1.0	1.0
Tel. sec. 111	0.5	1.0	0.5	1.0	1.0	1.0	1.0
Tel. sec. 1V	0.0	0.0	0.0	0.0	1.0	0.5	1.0
Radius in m	Lifting capacity in tonne						
4.0	12.4						
5.0	12.4	12.4	12.0	10.0	8.0		
6.0	12.4	12.4	12.0	10.0	8.0	8.1	
7.0	12.1	11.7	11.9	10.0	8.0	8.1	5.5
8.0	11.4	11.0	11.2	10.0	8.0	8.1	5.5
9.0	10.7	10.4	10.7	10.0	8.0	8.1	5.5
10.0	10.1	9.8	10.1	9.8	8.0	8.1	5.5
11.0	9.6	9.3	9.7	9.4	8.0	8.1	5.5
12.0	9.0	8.8	9.2	9.1	8.0	8.1	5.5
13.0	8.6	8.4	8.8	8.7	7.9	8.1	5.5
14.0	8.1	8.0	8.4	8.4	7.6	7.9	5.5
15.0	7.8	7.6	8.1	8.1	7.3	7.7	5.5
16.0	7.4	7.3	7.7	7.8	6.9	7.5	5.5
18.0	6.8	6.7	7.2	7.3	6.3	7.1	5.5
20.0	6.3	6.0	6.3	6.9	5.5	6.8	5.5
22.0	5.7	5.5	5.1	5.6	5.0	5.9	5.5
24.0	4.7	5.0	4.1	4.6	4.5	4.9	5.1
26.0	3.8	4.6	3.3	3.8	4.1	4.0	4.3
28.0	3.1	3.9	2.6	3.0	3.7	3.3	3.6
30.0	2.5	3.3	2.0	2.4	3.3	2.7	2.9
32.0		2.8	1.5	1.9	3.1	2.1	2.4
34.0			1.0	1.4	2.8	1.7	1.9
36.0				1.0	2.3	1.2	1.5
38.0				0.6	2.0	0.9	1.1
40.0					1.6	0.6	0.8
42.0							0.5

LOAD RATINGS IN TONNES

15.8t

360°
OUTRIGGER BASE - 8.35 x 7.20m
DIN 15019-2

Lengths of swing-away lattice extension 8,0 m							
Angle of swing-away lattice extension 16°							
	Main boom - fixed lengths in m						
	27.0	27.1	30.9	34.9	35.2	39.0	43.0
Slewing Range	360°						
Tel. sec. 1	1.0	0.0	1.0	1.0	0.0	1.0	1.0
Tel. sec. 11	0.5	1.0	1.0	1.0	1.0	1.0	1.0
Tel. sec. 111	0.5	1.0	0.5	1.0	1.0	1.0	1.0
Tel. sec. 1V	0.0	0.0	0.0	0.0	1.0	0.5	1.0
Radius in m	Lifting capacity in tonne						
5.0	9.0	8.8					
6.0	8.5	8.4	8.4	8.2			
7.0	8.1	8.0	8.1	7.9	7.4	7.4	
8.0	7.8	7.7	7.8	7.7	7.2	7.3	5.6
9.0	7.5	7.4	7.5	7.4	6.9	7.1	5.6
10.0	7.2	7.1	7.2	7.2	6.8	6.9	5.6
11.0	6.9	6.8	7.0	7.0	6.5	6.7	5.6
12.0	6.6	6.6	6.8	6.8	6.2	6.6	5.6
13.0	6.3	6.2	6.6	6.6	6.0	6.3	5.6
14.0	6.0	5.9	6.3	6.4	5.9	6.0	5.6
15.0	5.8	5.7	6.1	6.1	5.7	5.9	5.6
16.0	5.6	5.6	5.8	5.9	5.6	5.8	5.5
18.0	5.3	5.3	5.5	5.6	5.3	5.5	5.4
20.0	5.0	5.0	5.2	5.3	5.1	5.3	5.2
22.0	4.8	4.8	5.0	5.1	4.8	5.1	5.0
24.0	4.6	4.6	4.4	4.9	4.5	4.9	4.9
26.0	4.0	4.4	3.5	4.0	4.1	4.3	4.5
28.0	3.2	4.1	2.8	3.2	3.8	3.5	3.8
30.0	2.5	3.4	2.1	2.6	3.4	2.9	3.1
32.0	1.9	2.8	1.6	2.0	3.1	2.3	2.6
34.0			1.1	1.5	2.8	1.8	2.1
36.0				1.1	2.4	1.4	1.6
38.0				0.7	2.0	1.0	1.3
40.0					1.6	0.6	0.9
42.0							0.6

LOAD RATINGS IN TONNES

15.8t

360°
OUTRIGGER BASE - 8.35 x 7.20m
DIN 15019-2

Lengths of swing-away lattice extension 13,0 m							
Angle of swing-away lattice extension 0°							
	Main boom - fixed lengths in m						
	27.0	27.1	34.9	35.2	39.0	43.0	
Slewing Range	360°						
Tel. sec. 1	1.0	0.0	1.0	0.0	1.0	1.0	
Tel. sec. 11	0.5	1.0	1.0	1.0	1.0	1.0	
Tel. sec. 111	0.5	1.0	1.0	1.0	1.0	1.0	
Tel. sec. 1V	0.0	0.0	0.0	1.0	0.5	1.0	
Radius in m	Lifting capacity in tonne						
5.0	6.2	6.2					
6.0	6.2	6.2	5.8	4.7			
7.0	6.2	6.2	5.8	4.7	4.7		
8.0	6.1	5.9	5.7	4.7	4.7		3.7
9.0	5.7	5.6	5.5	4.7	4.7		3.7
10.0	5.4	5.3	5.3	4.7	4.7		3.7
11.0	5.1	5.0	5.1	4.7	4.7		3.7
12.0	4.9	4.8	4.9	4.5	4.7		3.7
13.0	4.6	4.6	4.8	4.4	4.5		3.7
14.0	4.4	4.4	4.6	4.2	4.4		3.7
15.0	4.2	4.2	4.4	4.1	4.3		3.7
16.0	4.0	4.0	4.3	4.0	4.2		3.7
18.0	3.7	3.7	4.0	3.7	3.9		3.7
20.0	3.4	3.4	3.7	3.5	3.7		3.6
22.0	3.2	3.2	3.5	3.3	3.5		3.4
24.0	3.0	3.0	3.3	3.1	3.3		3.3
26.0	2.8	2.8	3.1	3.0	3.1		3.1
28.0	2.6	2.6	2.9	2.8	3.0		3.0
30.0	2.5	2.4	2.8	2.7	2.8		2.8
32.0	2.3	2.3	2.4	2.6	2.5		2.7
34.0	2.1	2.2	1.9	2.4	2.1		2.3
36.0	1.7	2.1	1.5	2.3	1.7		1.9
38.0			1.1	2.2	1.3		1.5
40.0			0.8	2.0	1.0		1.2
42.0			0.5	1.7	0.7		0.9
44.0				1.4			0.6

LOAD RATINGS IN TONNES

15.8t

360°
OUTRIGGER BASE - 8.35 x 7.20m
DIN 15019-2

Lengths of swing-away lattice extension 13,0 m							
Angle of swing-away lattice extension 16°							
	Main boom - fixed lengths in m						
	27.0	27.1		34.9	35.2	39.0	43.0
Slewing Range	360°						
Tel. sec. 1	1.0	0.0		1.0	0.0	1.0	1.0
Tel. sec. 11	0.5	1.0		1.0	1.0	1.0	1.0
Tel. sec. 111	0.5	1.0		1.0	1.0	1.0	1.0
Tel. sec. 1V	0.0	0.0		0.0	1.0	0.5	1.0
Radius in m	Lifting capacity in tonne						
7.0	4.4	4.3					
8.0	4.2	4.1		4.1			
9.0	4.0	4.0		4.0	3.8		
10.0	3.9	3.8		3.9	3.7	3.7	
11.0	3.7	3.7		3.7	3.6	3.6	3.5
12.0	3.6	3.5		3.6	3.5	3.5	3.4
13.0	3.4	3.4		3.5	3.4	3.5	3.3
14.0	3.3	3.3		3.4	3.3	3.4	3.3
15.0	3.2	3.2		3.3	3.2	3.3	3.2
16.0	3.1	3.1		3.2	3.1	3.2	3.1
18.0	2.9	2.9		3.1	3.0	3.0	3.0
20.0	2.8	2.7		2.9	2.8	2.9	2.9
22.0	2.6	2.6		2.8	2.7	2.8	2.8
24.0	2.5	2.5		2.7	2.6	2.7	2.7
26.0	2.4	2.4		2.6	2.5	2.6	2.6
28.0	2.3	2.3		2.5	2.4	2.5	2.5
30.0	2.2	2.2		2.4	2.3	2.4	2.4
32.0	2.1	2.1		2.3	2.3	2.3	2.3
34.0	2.1	2.1		2.2	2.2	2.3	2.3
36.0	1.7	2.1		1.7	2.1	1.9	2.1
38.0				1.3	2.1	1.5	1.7
40.0				0.9	2.1	1.2	1.4
42.0				0.6	1.8	0.8	1.0
44.0					1.4	0.5	0.8