



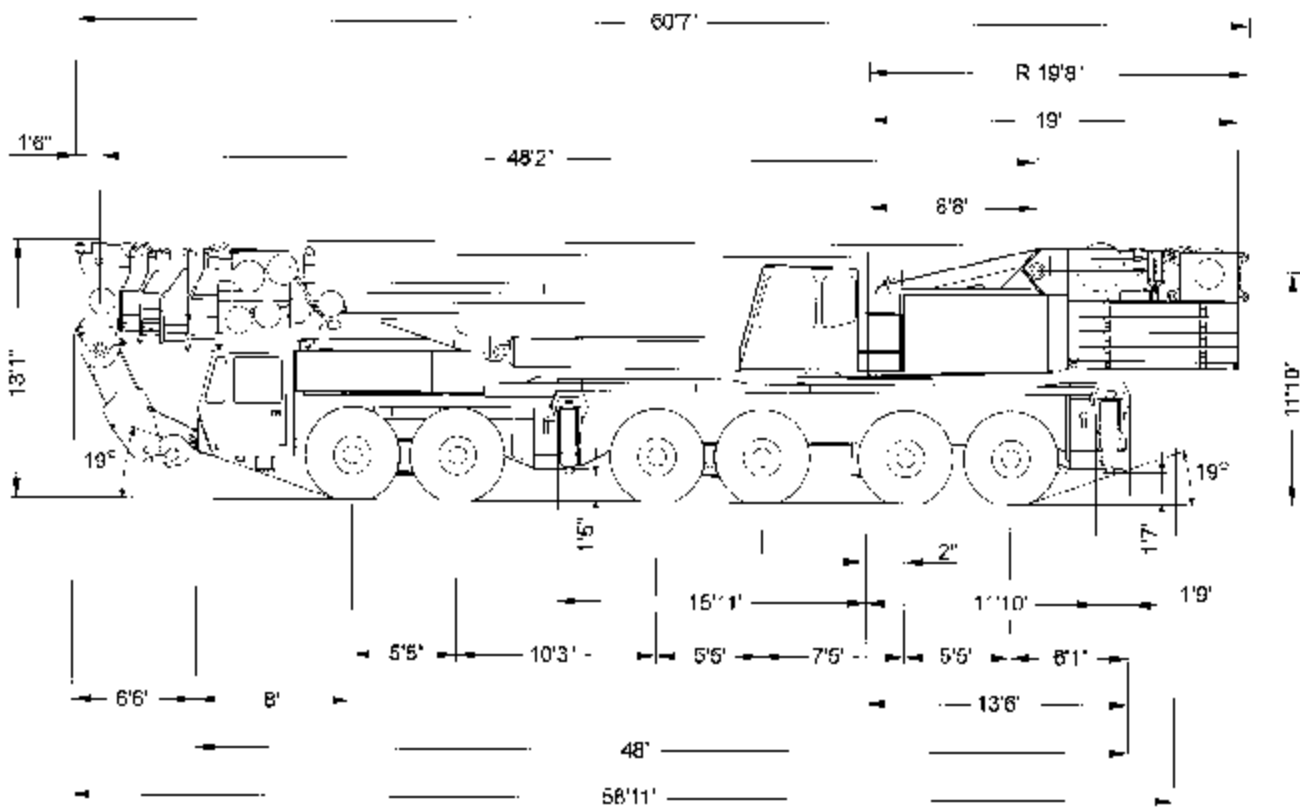
DEMAG
Material Handling Equipment

Mobile Cranes

Demag AC 665

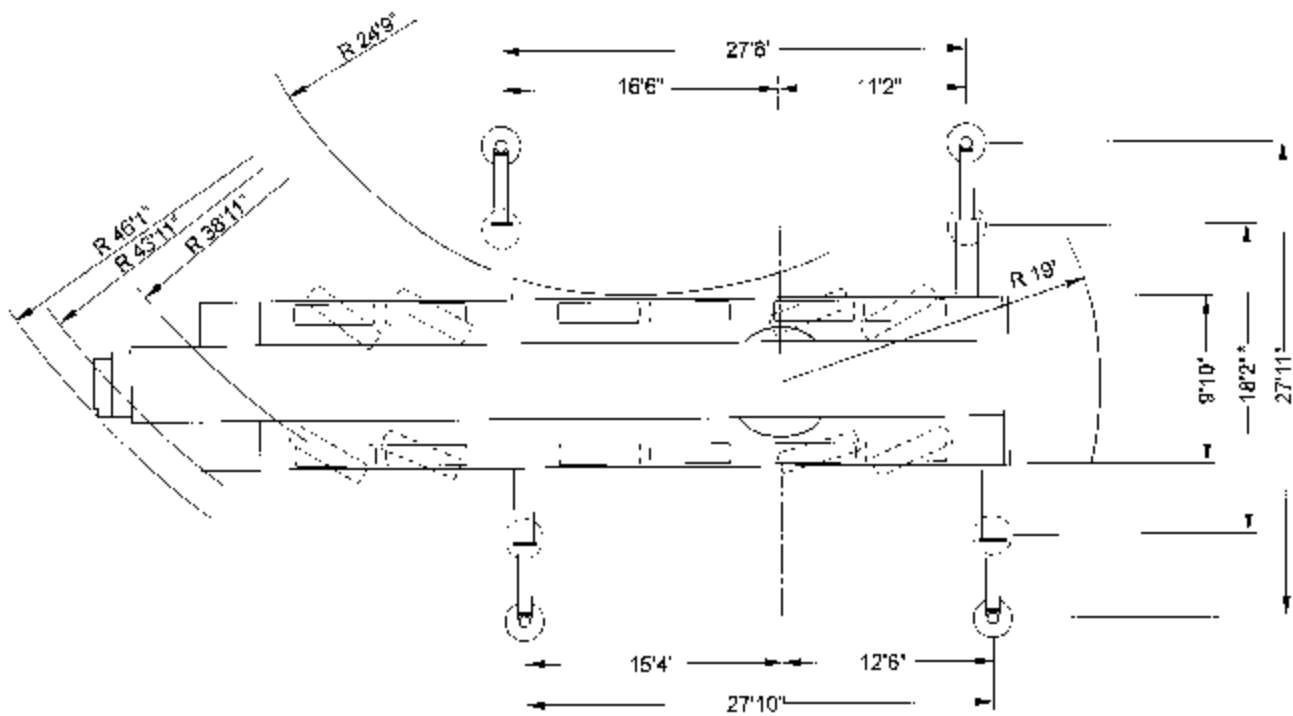


Dimensions





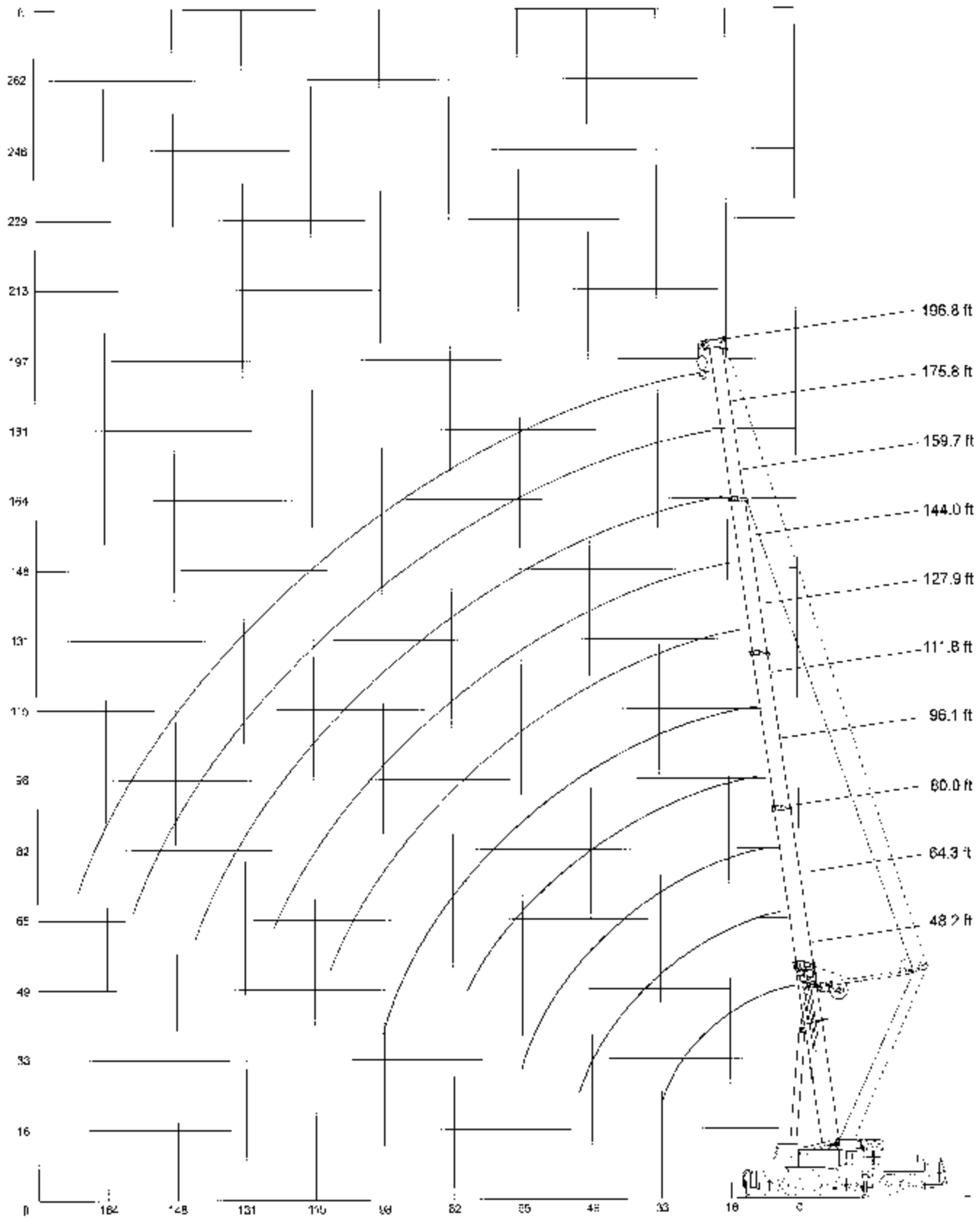
Dimensions



* Duties w th reduced outrigger base on request



Working ranges main boom





Lifting capacities main boom

220,500 lb



360°

85%

Radius ft	Main boom											
	48.2 ¹⁾ ft	48.2 ft	64.3 ft	80.0 ft	96.1 ft	111.8 ft	111.8 ft	127.9 ft	144.0 ft	159.7 ft	175.9 ft	196.8 ft
B	1.000 b											
10	600.0 ²⁾	-	-	-	-	-	-	-	-	-	-	-
11	544.0 ²⁾	465.0*	319.0	-	-	-	-	-	-	-	-	-
13	504.0 ²⁾	449.0*	319.0	264.0	-	-	-	-	-	-	-	-
15	434.0*	401.0*	319.0	264.0	-	-	-	-	-	-	-	-
16	393.0*	364.0*	312.0	264.0	209.0	-	-	-	-	-	-	-
18	363.0*	348.0	309.0	264.0	209.0	-	-	-	-	-	-	-
19	311.0	308.0	284.0	264.0	209.0	158.5	158.5	-	-	-	-	-
23	257.0	257.0	253.0	242.0	193.5	158.5	158.5	132.0	-	-	-	-
26	227.0	227.0	222.0	222.0	178.5	154.5	158.5	132.0	121.5	-	-	-
29	209.0	209.0	199.0	201.0	165.0	144.0	153.0	132.0	117.5	84.5	-	-
33	177.0	177.0	173.0	174.0	150.0	130.5	142.5	122.5	108.5	84.5	72.5	-
39	-	-	144.0	145.0	132.0	114.5	129.5	107.5	96.3	86.0	72.5	55.1
46	-	-	117.5	118.5	114.0	99.0	116.5	93.5	84.5	77.0	67.0	55.0
52	-	-	101.5	102.5	100.0	89.0	106.5	84.5	75.5	69.0	61.5	52.6
59	-	-	-	88.0	86.0	78.0	91.5	76.0	68.0	62.0	55.8	48.5
65	-	-	-	78.0	75.5	71.0	81.5	70.0	63.0	56.8	51.7	46.1
72	-	-	-	-	66.0	64.0	71.5	63.5	57.4	51.9	47.7	41.3
79	-	-	-	-	57.8	58.1	64.5	58.2	52.3	47.4	44.2	38.0
85	-	-	-	-	-	52.5	58.5	54.0	48.4	44.0	41.7	35.4
92	-	-	-	-	-	48.3	52.3	49.7	44.2	40.5	38.9	32.3
98	-	-	-	-	-	38.4	45.5	46.2	41.2	37.8	36.7	30.3
105	-	-	-	-	-	-	-	41.0	37.9	35.0	34.1	27.9
111	-	-	-	-	-	-	-	37.5	35.4	32.8	32.1	26.5
113	-	-	-	-	-	-	-	-	32.8	30.4	30.0	24.9
124	-	-	-	-	-	-	-	-	31.0	28.4	28.2	23.5
131	-	-	-	-	-	-	-	-	-	26.5	26.5	22.3
138	-	-	-	-	-	-	-	-	-	24.3	24.5	21.1
144	-	-	-	-	-	-	-	-	-	21.1	23.2	20.1
151	-	-	-	-	-	-	-	-	-	-	22.0	18.8
157	-	-	-	-	-	-	-	-	-	-	20.8	18.1
164	-	-	-	-	-	-	-	-	-	-	-	16.9
170	-	-	-	-	-	-	-	-	-	-	-	15.9

Boom extension sequence in %

Tota 1	0	0	45	45	90	90	45	90	90	90	90	100
Tota 2	0	0	0	45	45	90	45	45	90	90	90	100
Tota 3	0	0	0	0	0	0	45	45	45	90	90	100
Tota 4	0	0	0	0	0	0	45	45	45	45	80	100

Remarks

* with heavy duty attachment

** with heavy duty attachment, double hook block

1) only over rear

2) with heavy duty attachment, double hook block and add. centre outriggers